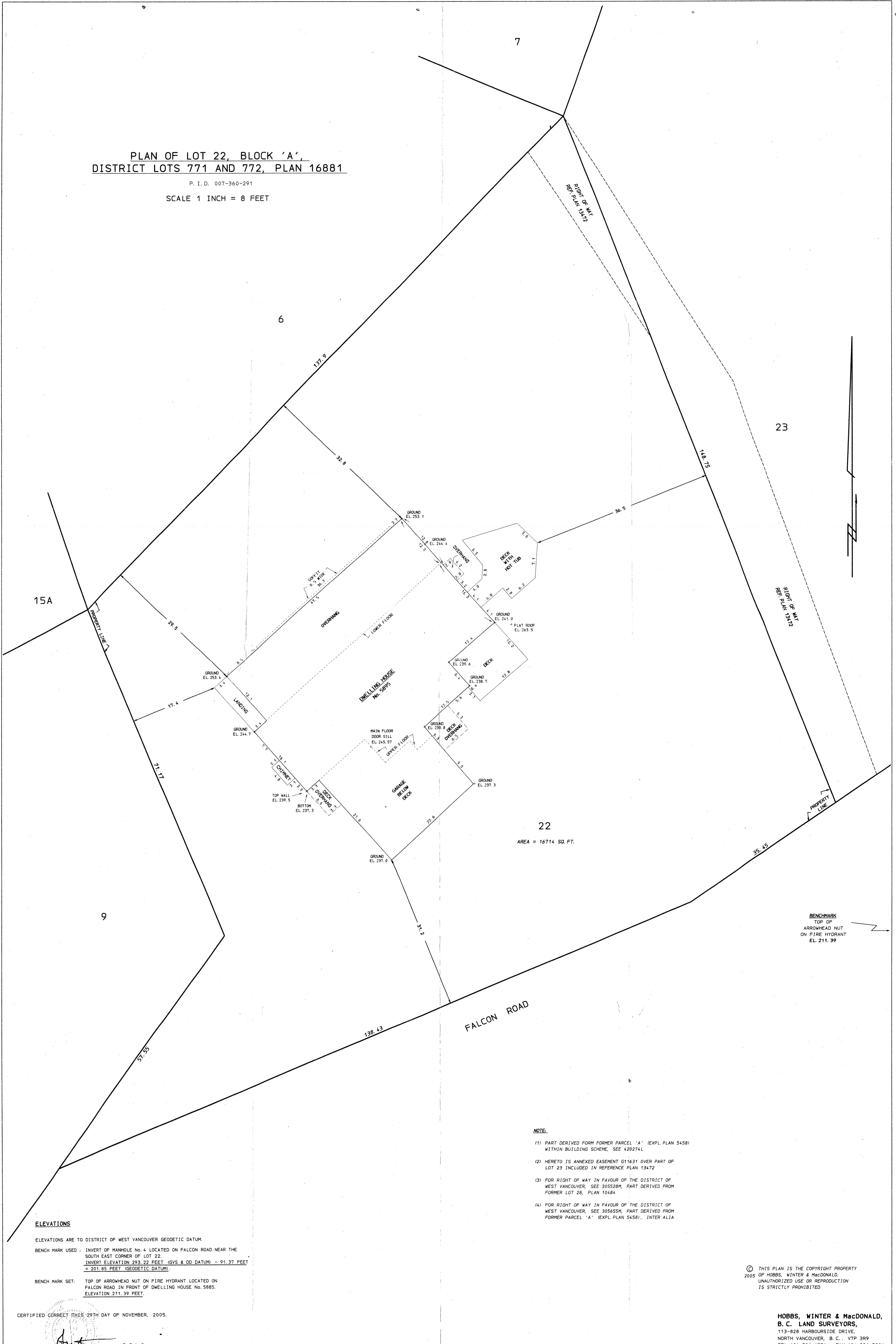


PLAN OF LOT 22, BLOCK 'A',  
DISTRICT LOTS 771 AND 772, PLAN 16881

P. I. D. 007-360-291

SCALE 1 INCH = 8 FEET



22  
AREA = 16714 SQ. FT.

BENCHMARK  
TOP OF  
ARROWHEAD NUT  
ON FIRE HYDRANT  
EL. 211.39

ELEVATIONS

ELEVATIONS ARE TO DISTRICT OF WEST VANCOUVER GEODETIC DATUM.

BENCH MARK USED : INVERT OF MANHOLE No. 4 LOCATED ON FALCON ROAD NEAR THE SOUTH EAST CORNER OF LOT 22.  
INVERT ELEVATION 293.22 FEET (GVS & DD DATUM) - 91.37 FEET = 201.85 FEET (GEODETIC DATUM).

BENCH MARK SET: TOP OF ARROWHEAD NUT ON FIRE HYDRANT LOCATED ON FALCON ROAD IN FRONT OF DWELLING HOUSE No. 5885.  
ELEVATION 211.39 FEET.

NOTE.

- (1) PART DERIVED FROM FORMER PARCEL 'A' (EXPL. PLAN 5458) WITHIN BUILDING SCHEME, SEE 420274L
- (2) HERETO IS ANNEXED EASEMENT G11631 OVER PART OF LOT 23 INCLUDED IN REFERENCE PLAN 13472
- (3) FOR RIGHT OF WAY IN FAVOUR OF THE DISTRICT OF WEST VANCOUVER, SEE 305528M, PART DERIVED FROM FORMER LOT 28, PLAN 10484
- (4) FOR RIGHT OF WAY IN FAVOUR OF THE DISTRICT OF WEST VANCOUVER, SEE 305655M, PART DERIVED FROM FORMER PARCEL 'A' (EXPL. PLAN 5458), INTER ALIA

CERTIFIED CORRECT THIS 29TH DAY OF NOVEMBER, 2005.

*[Signature]*  
B. C. L. S.

© THIS PLAN IS THE COPYRIGHT PROPERTY  
2005 OF HOBBS, WINTER & MACDONALD.  
UNAUTHORIZED USE OR REPRODUCTION  
IS STRICTLY PROHIBITED

HOBBS, WINTER & MACDONALD,  
B. C. LAND SURVEYORS,  
113-828 HARBOURSIDE DRIVE,  
NORTH VANCOUVER, B. C. V7P 3R9  
TEL 604-986-1371 FAX 604-986-5204  
EMAIL: hwsurveyors@telus.net